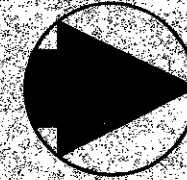


40-91

# PLAT OF THE COUNTRYSIDE TOWNHOMES PLAT NO. 3

BEING A PORTION OF THE NORTHWEST ONE-QUARTER OF SECTION 25, TOWNSHIP 44 SOUTH, RANGE 42 EAST PALM BEACH COUNTY, FLORIDA NOV. 1979 — SHEET 2 of 2

91

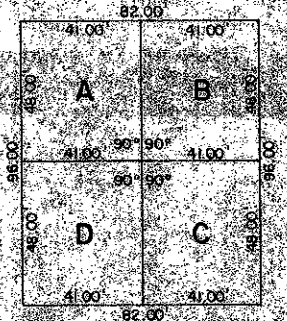
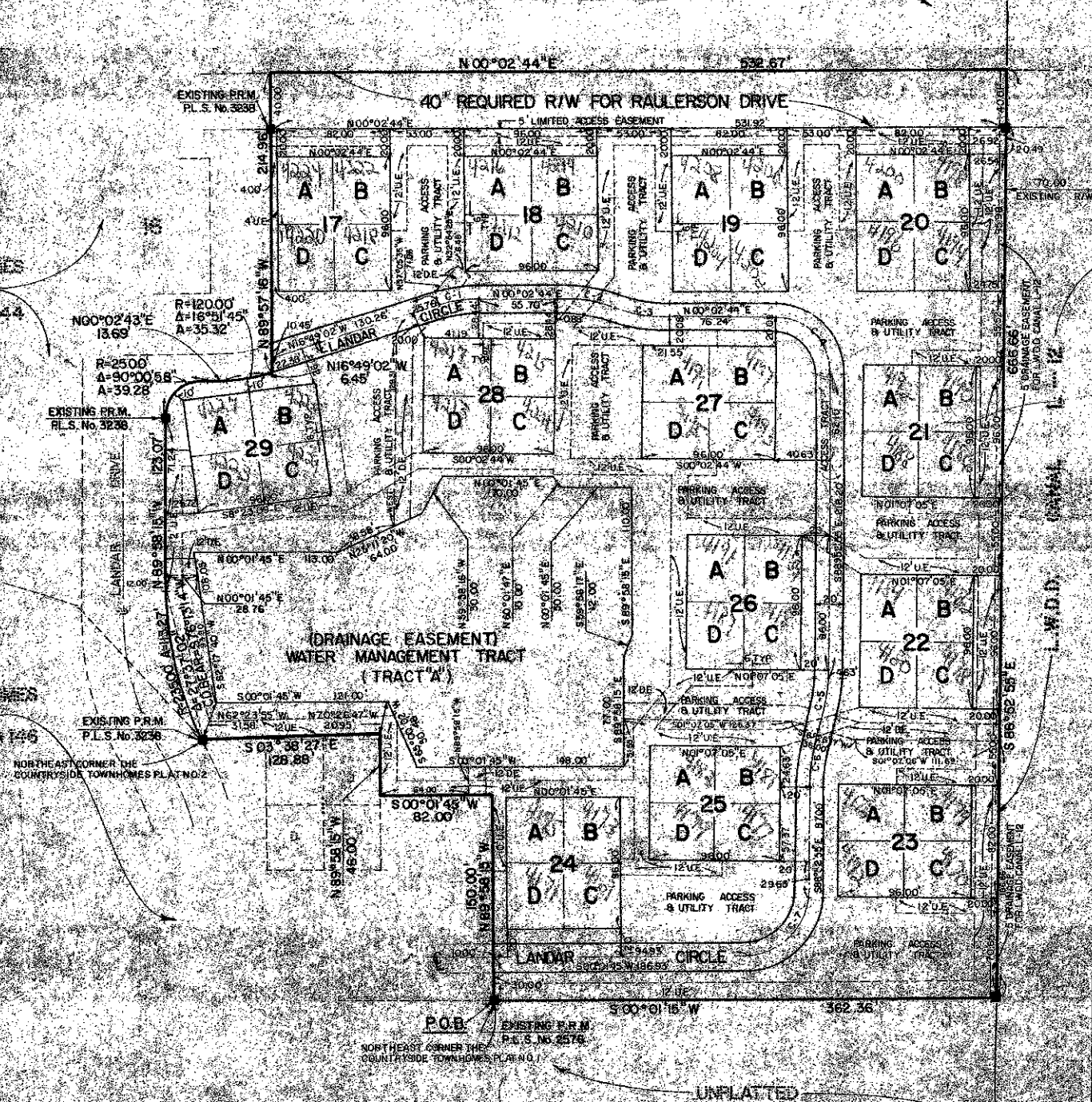


STATE OF FLORIDA  
COUNTY OF PALM BEACH  
THIS PLAT WAS FILED FOR  
RECORD AT THE  
OFFICE OF THE COUNTY CLERK  
ON 11/15/79 AND IS PUBLIC RECORD  
BOOK 1, PAGE 91  
AND  
BY \_\_\_\_\_ CLERK  
OF SAID COURT  
P.L.S. NO. \_\_\_\_\_

PALM BEACH VILLAS II PLAT NO. 2  
P.B. 31 PGS. 210 - 212

THE COUNTRYSIDE TOWNHOMES  
PLAT NO. 2  
P.B. 36 PGS. 43 & 44

THE COUNTRYSIDE TOWNHOMES  
PLAT NO. 1  
P.B. 35 PGS. 145 & 146



TYPICAL TOWNHOMES LOT DETAIL  
SCALE 1"=30'

CURVE TABLE

CURVE NO.	RADIUS	DELTA	ARC
1	10.00	15° 51' 46"	32.31
2	10.13	20° 06' 37"	35.31
3	10.13	23° 26' 57"	38.31
4	10.00	27° 02' 21"	41.31
5	10.00	30° 33' 43"	44.31
6	10.00	34° 10' 47"	47.31
7	10.00	37° 53' 40"	50.31

SURVEYOR'S NOTES  
ALL LOT TIES ARE 90° OFF  
REFERENCE LINE UNLESS  
SHOWN OTHERWISE.

0227-001

Meridian  
Surveying and Mapping, Inc.  
2222 So. Congress  
West Palm Beach, Florida 33411  
Tel. (407) 833-3333  
FAX (407) 833-3333

THE COUNTRYSIDE  
TOWNHOMES PLAT NO. 3